



The Complete Rebar Solution[®]

Applied Systems Associates, Inc.

- Estimating
- CAD/Detailing
- Bar List
- Scheduling
- Computer Shearing
- Tags
- Equipment Interfaces
- Opto-Shear Console
- Barcoding
- Material Tracking
- Delivery Ticket
- Inventory
- Contract Management
- General Ledger
- Accounts Receivable
- Accounts Payable
- Payroll
- Human Resources

Applied Systems Associates, Inc., is the world's leading provider of software for the rebar industry. aSa's "Complete Rebar Solution" helps you run your business better by automating nearly every step of the reinforcing steel process — from estimating and detailing, to production, material tracking, billing, and general accounting.

Put our experience to work for your shop. Since 1969, aSa has been an innovator in rebar software technology. Methods, procedures, and presentation practices developed by aSa have become standards in the rebar industry. Our clients include hundreds of rebar fabricators worldwide, in addition to rebar estimators, detailers, and installers. Engineering firms, precast, prestress, and post-tension companies also benefit from aSa software and services. Our products help fabricators process millions of tons of reinforcing steel every year.

Your total solution provider. aSa is more than just a software developer. We pride ourselves on providing you with *complete* solutions, including hardware, networking, and information technology services. Our knowledgeable in-house team of computer and industry experts provides top-notch product support. With offices on several continents, aSa offers nearly 24x7 service to customers all over the world.



The Complete Rebar Solution[®]

The Complete Rebar Solution from aSa consists of fully integrated components that combine to automate every function of rebar fabrication – from estimating to shearing to billing – and all tasks in between. The software can be customized to integrate only those components that you require today, with the option to add more applications as your needs expand tomorrow.



Estimating

aSa Estimating helps you easily quantify fabrication and placing labor costs for a job. Weight summaries are available to aSa CAD/Detailing and Rebar Financials for easy comparison of actual detailed and shipped weights.



CAD/Detailing

Bundled with MicroStation[®], aSa CAD/Detailing assists you in creating placing drawings with speed and accuracy. Bar details taken off from the drawing are instantly available to aSa Bar List and other downstream applications.



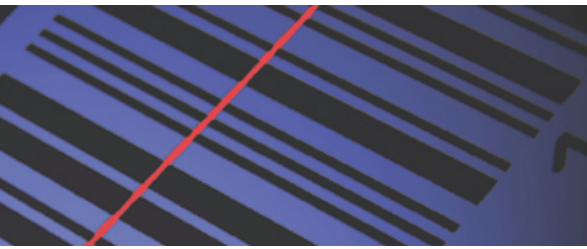
Bar List / Order Entry

aSa Bar List gives you the tools to create formal, sorted, weighted, and accumulated bar lists (orders); bar bend schedules (BBS); and placing lists with field instructions. Data generated in Bar List is used by downstream modules.



Scheduling / Planning

With drag-and-drop ease, aSa Scheduling helps you plan fabrication and delivery dates, as well as create instructions for loading your trucks. Scheduled orders automatically load into aSa Production for tag generation.



Production

aSa Production combines two powerful components. **Tags** are customizable and contain all required fabrication and placing instructions. **Shear Optimization** reduces scrap, increases production rates, and eliminates cutting/loading errors.



Bundle Inventory

aSa Bundle Inventory records stock receipts, relieves inventory, and performs book-to-physical reconciliation. By associating stock material to produced items, Bundle Inventory helps you to easily track and manage heat information.



Material Tracking

Using barcode scans, aSa Material Tracking validates and records every step of the fabrication process, including date, time, and employee responsible. Inquiries show real-time fabrication status, and reports give you a clear picture of machine and employee productivity rates.



Load Tracking

aSa Load Tracking uses scanning technology to verify that each bundle is loaded properly for shipment. Built-in checks prevent shipping errors, and scans provide real-time status updates on shipped material.



Shop Automation

The **aSa Opto-Shear Console** automates shearline functions, as well as downloads cutting instructions from aSa Shearing. **Equipment Interfaces** translate and download item tag data and bending dimensions to machinery by nearly every rebar equipment manufacturer worldwide.



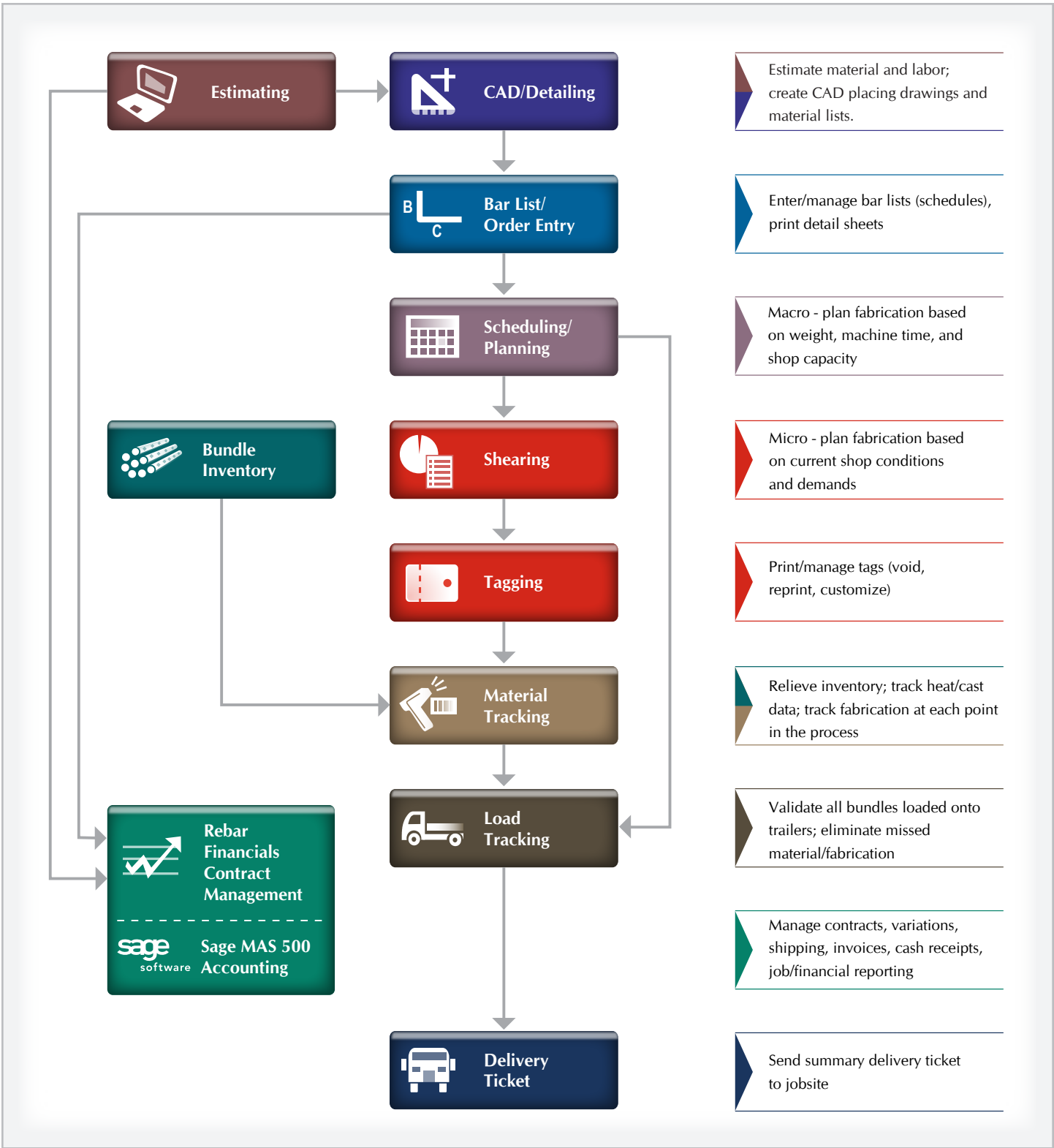
Delivery Ticket

aSa Delivery Ticket creates a professional-quality document for each shipment that you deliver. In addition to a list of the material shipped, the delivery ticket also includes key information, such as driver and jobsite instructions.



Rebar Financials

aSa Rebar Financials automates all accounting tasks specific to rebar fabrication, including contract management, inventory, shipping, billing, and accounts receivable. It connects to Sage MAS 500 accounting software and can connect to other third-party products, too.



World Headquarters

5270 Logan Ferry Road
 Murrysville, PA 15668 USA
 1.800.CALL.ASA
 + 1.724.733.8700
 www.asarebar.com

aSa Australia

8 Red Bean Close
 Suffolk Park NSW 2481
 Australia
 + 61.7.3018.7564

aSa India

P.O. Box 8388
 Jogeshwari (West)
 Mumbai - 400102
 India
 +91.9870284190