



ProRebar for Revit

CONNECT YOUR MODEL TO DOWNSTREAM REBAR OPERATIONS.

aSa ProRebar® for Revit® allows you to take off material from your Revit model and create a file containing all the information needed to automate fabrication, delivery, and installation activities with aSa rebar software solutions.

- **Improve project turn-around time and accuracy**

Regardless of whether you are a fabricator, engineer, or construction company, *everyone* benefits from sharing the model's data with downstream operations.

- **Keep it simple**

With ProRebar for Revit, you don't have to worry about using complicated third-party tools to generate aSa-ready takeoff. Simply make your selection, enter project details, and go.

- **Use your existing model and tools**

Create material takeoff files directly from your Revit model. Use Revit tools to select the material to be included. Revit project data is automatically populated into the export screen to save you time.

aSa applications automate all phases of rebar fabrication, from tagging and equipment automation, to material tracking and jobsite field placing.

All of these processes begin with a list of bars. When you create a Revit model, you *have* the list of bars in your modeling data. ProRebar for Revit is the vital "connector" that takes the material on your model and formats it for use in aSa downstream software.

Simple and Effective Takeoff

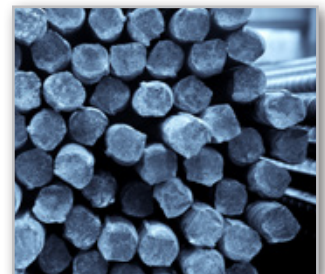
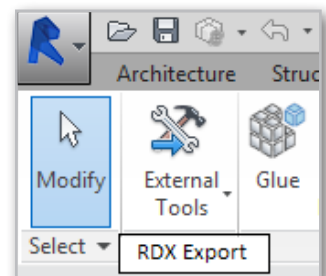
The process is simple. Use Revit's selection tools to select the area of the drawing that you want to take off. You can select a specific section, individual elements, or the entire drawing; it's completely up to you.

Next, click RDX Export in the Add-ons Menu. At this point, a window displays, pre-populated with project information from your Revit model.

You simply fill in any additional details and click Proceed. The system creates a specially formatted file that can be imported into aSa. On the model, all selected material is updated to an "Exported" status to prevent it from accidentally being taken off again.

Comprehensive Rebar File Format

At the heart of the process is the Rebar Data Exchange (RDX) file. RDX is a specially formatted XML file that contains all the data necessary to create a valid bar list in the aSa database. Easy import tools let fabricators bring in data from the RDX; once imported, the information can be processed just like any native aSa-generated bar list.



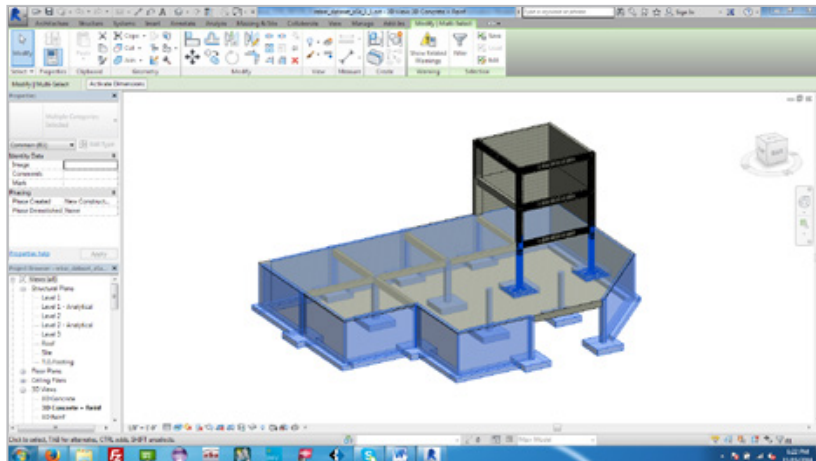
The Complete Rebar Solution®

- **Prevent takeoff errors**

When you perform an aSa ProRebar for Revit takeoff, the selected elements on the model are automatically updated to an "Exported" status to prevent them from being taken off again by accident.

- **Count on reliable export files**

aSa invested heavily in developing the Rebar Data Exchange (RDX) file format. RDX contains all the information necessary to successfully import into the aSa database.



Use Revit selection tools to select the area of the drawing that you want to take off. Enter basic project information, and the system creates a specially formatted file containing all the data necessary for use by aSa downstream software.

Job Information

Job ID: 14-102 Customer ID: JOSHUA
 Job Name: Goodman Plaza Customer Name: Joshua Construction Company, Inc.

Header Information

Control Code: 0002 Description: Foundation Reinforcing
 Sales Order ID: Drawing: R-1
 Release: 42 Detailer: JNC
 Revision:

Material Defaults

Building Code: ACI Alpha Character: A
 Building Code Version: 1983 Straight Vary Code: S - Same Mark
 Concrete Strength: 3000 Bent Vary Code: A - Auto Mark
 Steel Manufactured In: USA

Export Information

Export Path: C:\ProgramData\asa\Bar List Select Path...
 Export File: C:\ProgramData\asa\Bar List\rebar_data-0002.RDX

About aSa

aSa is the world's leading provider of rebar software. We have been developing solutions for the reinforcing steel industry since 1969. Once imported into aSa, RDX files from your Revit model allow fabricators to:

- Generate bundle tags and optimized shearing instructions
- Automate rebar machinery by scanning barcoded tags
- Validate all phases of fabrication and trailer loading
- Manage heat information and update on-hand inventory
- Track delivery and installation of all material

Applied Systems Associates, Inc.
www.asarebar.com

5270 Logan Ferry Road
 Murrysville, PA 15668 USA
 1.800.CALL.ASA 1.800.225.5272
 +1.724.733.8700

Worldwide service and support
 Visit asarebar.com/contact for a list of all aSa locations.