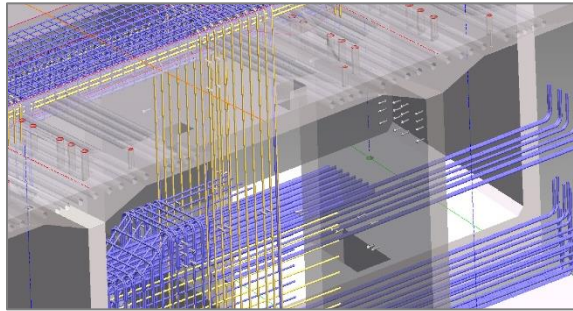


The right tools can help you level the playing field in precast competition.

Building on more than 50 years of industry leading software solutions, aSa has partnered with Bentley Systems to provide precast producers, designers, fabricators, and contractors with advanced modeling and production tools.



ProConcrete

A powerful 3D BIM tool that's remarkably easy to use.

ProConcrete™ is an advanced 3D CAD platform used to model, detail, and schedule a wide range of concrete structure types. In addition to improving project turn-around time, the system allows concrete and rebar to be fully realized components of each project's vision.

The competitive benefits of ProConcrete 3D Modeling include:

- **Allows for virtual collaboration** among all stakeholders.
- **Reveals conflicts** early when they can be economically solved.
- **Reduces jobsite risk** by visualizing design intent in the field.
- **Saves valuable time** with real-time updates and sharing.
- **Automates tedious work** by eliminating redundant processes.
- **Enables collaboration** - Interoperable with nearly all BIM software packages.
- **Provides added value** owners can benefit from long after construction is complete.



ProRebar

Seamlessly connect 3D BIM to production operations.

ProRebar® is a solution that combines Bentley ProConcrete, a powerful 3D modeling engine, with special aSa tools designed for precast, fabrication, and placing operations.

Quickly and accurately model all components of the structure, including concrete, rebar, mesh, connectors, and other accessories. The system easily handles all forms of concrete elements. ProRebar provides a database-level connection from the 3D model to downstream operations.

From a single ProRebar model, you can automatically generate 2D shop drawings, bar bending schedules, and parts lists. Changes to the 3D model update all related drawings and documents.

Contact us for a no-risk evaluation, and together we'll determine the best solution for your precast operation.

1.800.CALL.ASA | www.asaHQ.com



DESIGN, FABRICATION, AND CONSTRUCTION SOLUTIONS

aSa is proud to be a **Bentley** partner in the development of **ProConcrete** and **ProRebar**. At aSa, we bring decades of experience in steel reinforced concrete production control systems into better solutions for concrete construction.